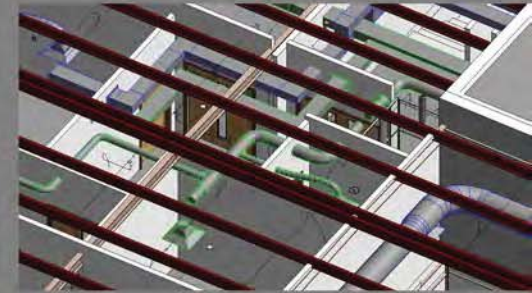


Building Information Modelling (BIM)



GGP continually use Building Information Modelling and are committed to developing the implementation of BIM to Level 2 standards.

GGP currently use Autodesk Revit on a significant proportion of our projects to produce 3D Models for both Architectural and Structural elements of work, which we believe offers our clients greater value and allows more accurate and detailed drawings to be produced.

There are many wide ranging benefits as a result of successfully implementing BIM on a project, for both the client and the design team. These include; reduced risk, improved asset management, stake holder engagement, reduction in cost, construction sequence simulation, 3D modelling and visualisations.

GGP Consult believe that through the continued use of BIM on future projects, we can deliver improvements in cost, value and time to our clients. Providing them with a data rich asset information model to assist with future facilities management and maintenance of the asset.

We always work with our clients to help them understand the BIM process and realise the benefits it can bring, and with the project team to achieve effective collaboration and data sharing.

Architectural Services

- Feasibility/Concept Design
- BIM – Building Information Modelling
- Revit 3D Detailing
- 3D Visualisations and Walkthroughs
- Interior Design
- Planning Applications
- Building Regulations Applications
- Detailed Design
- Tender Packages
- Site Supervision
- Budget Costings
- Design and Build Support
- Sustainability

Engineering Services

- Civil Engineering
 - All Civil Design
 - Flood Risk Assessments
 - Site Investigations
 - Drainage
 - Highway Design
- Structural Engineering
 - All Structural Design
 - Structural Assessments
 - Seismic Design
 - Fabrication Detailing – Tekla
- Rail Engineering
- Marine Engineering
- 3D Laser Scanning Surveys
- Topographical Surveys
- CDM Co-ordination
- Expert Witness
- Reverse Engineering